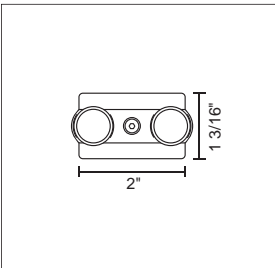


ENZIS INSTALLATION INSTRUCTIONS

USA



TRACK ISO CONNECTOR

ART. NO.
 140 330bz bronze, iso
 140 330mc matte chrome, iso

TECHNICAL DATA

Description: Track connection element; non-conductive.
 Design: Jorg Westerheide
 Dimensions: length: 1 3/4"
 Material: brass, matte chrome plated, plastic
 Supply voltage: 12 V
 Current: max. 25 A / circuit
 Load: max. 300 W / circuit

IMPORTANT SAFETY INSTRUCTIONS



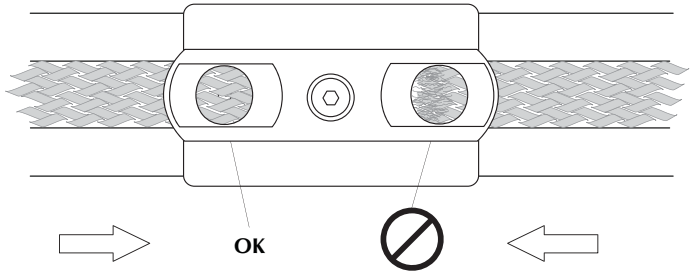
1. THIS PRODUCT MUST BE INSTALLED BY A PERSON FAMILIAR WITH THE CONSTRUCTION AND OPERATION OF THE PRODUCT AND THE HAZARDS INVOLVED, IN ACCORDANCE WITH LOCAL NEC CODE.
2. FOR USE WITH ENZIS RAIL NETWORK ONLY.
3. The Enzis rail system is not intended for use with a power supply cord or convenience receptacle adaptor. This rail system is to be supplied by Bruck Lighting.
4. Do not install this rail in damp or wet locations.
5. Do not install any part of a rail system less than 5 feet above the floor.
6. Do not install any fixture assembly closer than 6 inches from any curtain, or similar combustible material.
7. Disconnect electrical power before adding to or changing the configuration of the rail.
8. Do not attempt to energize anything other than lighting rail fixtures on the rail. To reduce the risk of fire and electric shock, do not attempt to connect power tools, extension cords, appliances, and the like to the rail.
9. This track system MUST BE HARD WIRED. For all the wire connections, use Listed Wire Nuts.
10. Do not connect a rail to more than one circuit unless the rail is constructed so that it can be used with more than one circuit. Check with a qualified electrician. Although the rail lighting system may seem to operate acceptably, a dangerous overload of the neutral may occur and result in a risk of fire.
11. Secondary connections must be clean and tight to avoid arcing and overheating!
12. Warranty is void in case of unauthorized modifications and/ or improper use.

SAVE THESE INSTRUCTIONS AND REFER TO THEM WHEN ADDITIONS TO OR CHANGES IN THE TRACK CONFIGURATION ARE MADE

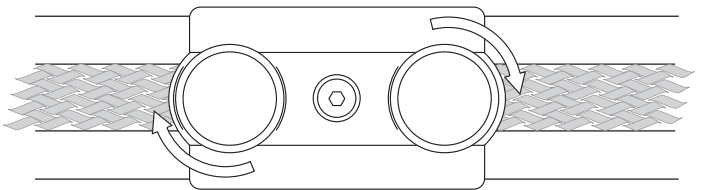
CONTENTS OF DELIVERY

1 track connector

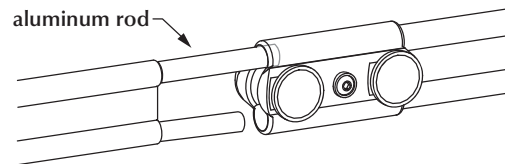
Warning!
 Thumb screws must be removed completely so that the track can be inserted.



Insert both track ends into connector before tightening thumb screws; the conductive braiding should not be visibly frayed or protruding through the screw hole (arcing and overheating may result).



Firmly tightening thumb to complete the installation.



To prevent track sagging, when connecting track, pull out 3" of both internal aluminum rods on one side so that they can pass through the connector

USER MANUAL

USA

READ ALL OF THESE INSTALLATION INSTRUCTIONS BEFORE INSTALLING THE RAIL SYSTEM

INSTALLING THE TRACK CONNECTOR

- loosen the thumb screws completely so that the Enzis track can be inserted.
- insert both track ends into connector before tightening thumb screws.
- do not damage the conductive braiding during installation. tighten the thumb screws firmly to complete the installation.

Warning!
 iso connector must use plastic thumb screws.