

PHONE: (303)442-1255 • FAX: (303)449-5274 • E-MAIL: itl@itlboulder.com • WEBSITE: www.itlboulder.com

REPORT NUMBER: ITL56710

DATE: 09/23/05

PREPARED FOR: BRUCK LIGHTING SYSTEMS

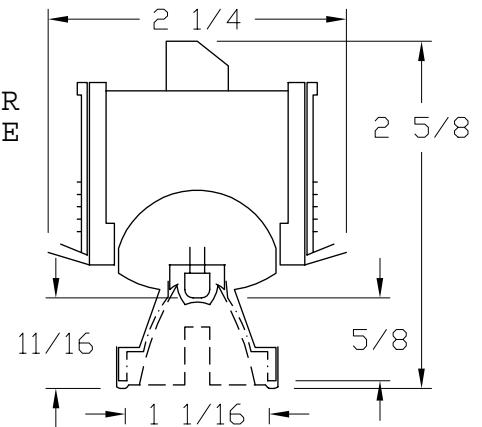
CATALOG NUMBER: LEDRA - 30 DEGREE LENS

LUMINAIRE: FABRICATED METAL HOUSING WITH PIVOTING OPTICAL ASSEMBLY, OPTICAL ASSEMBLY HAS UNFINISHED INTERIOR SURFACE, ONE CIRCUIT BOARD CONTAINING 1 LED, MOLDED WHITE PLASTIC RING ENCOMPASSING LED BASE, CLEAR CONICAL PLASTIC REFRACTOR WITH PRISMATIC BOTTOM IN FABRICATED SILVER PAINTED METAL TRIM RING.

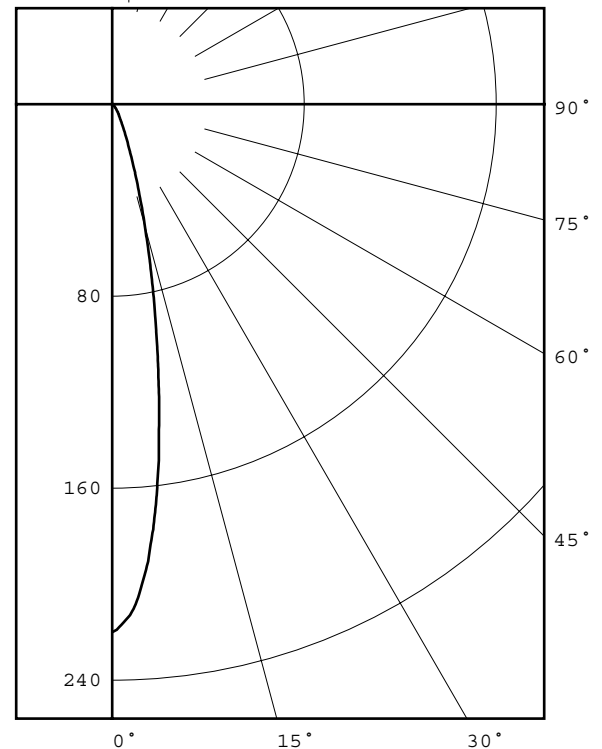
LAMP: ONE WHITE LIGHT EMITTING DIODE (LED), VERTICAL BASE-UP POSITION.

NOTE: DATA SHOWN IS ABSOLUTE FOR THE SAMPLE PROVIDED AT 120 VOLTS AC INPUT TO THE LED ASSEMBLY POWER SUPPLY. A 4 INCH POWER CORD EXTENDS FROM THE POWER SUPPLY TO THE LED ASSEMBLY.

TOTAL INPUT WATTS= 3.5 AT 120.0 VOLTS



DEG	CANDELA	LUMENS
0	220	
5	184	15
15	53	14
25	11	5
35	4	2
45	1	1
55	1	0
65	1	0
75	0	0
85	0	0
90	0	0



ZONAL ZONE	LUMEN LUMENS	SUMMARY %FIXT
0- 30	36	86.3
0- 40	38	92.2
0- 60	40	97.0
0- 90	41	100.0
90-180	0	0.0
0-180	41	100.0

CIE TYPE - DIRECT
LUMINAIRE SPACING CRITERION = 0.3
LUMINOUS DIAMETER: 1.062

LUMINANCE DATA IN CANDELA/SQ M
ANGLE AVERAGE
IN DEG

45	2471.
55	3047.
65	4135.
75	0.
85	0.

Checked *N.WHITE*

Approved *R.BEATTIE*



INDEPENDENT TESTING LABORATORIES, INC.
 3386 LONGHORN ROAD, BOULDER, CO 80302 USA

PHONE: (303)442-1255 • FAX: (303)449-5274 • E-MAIL: itl@itlboulder.com • WEBSITE: www.itlboulder.com

REPORT NUMBER: ITL56710
 PREPARED FOR: BRUCK LIGHTING SYSTEMS

DATE: 09/23/05

CANDELA DISTRIBUTION

0.0	220
0.5	219
1.0	217
1.5	215
2.0	213
2.5	210
3.0	206
3.5	201
4.0	196
4.5	191
5.0	184
5.5	178
6.0	171
6.5	164
7.0	156
7.5	149
8.0	140
8.5	132
9.0	125
9.5	117
10.0	110
10.5	103
11.0	96
11.5	90
12.0	84
12.5	78
13.0	72
13.5	67
14.0	62
14.5	57
15.0	53
15.5	49
16.0	45
16.5	41
17.0	38
17.5	35
18.0	32
18.5	30
19.0	27
19.5	25
20.0	23
22.5	16
25.0	11
27.5	8
30.0	6
32.5	5
35.0	4
37.5	3
40.0	2
42.5	2
45.0	1
47.5	1
50.0	1
52.5	1
55.0	1
57.5	1
60.0	1
65.0	1
70.0	1
75.0	0
80.0	0
85.0	0
90.0	0

ZONAL LUMEN SUMMARY

0- 5	5.
5- 10	10.
10- 15	9.
15- 20	6.
20- 25	3.
25- 30	2.
30- 35	1.
35- 40	1.
40- 45	1.
45- 50	0.
50- 55	0.
55- 60	0.
60- 65	0.
65- 70	1.
70- 75	0.
75- 80	0.
80- 85	0.
85- 90	0.
90- 95	0.
95-100	0.
100-105	0.
105-110	0.
110-115	0.
115-120	0.
120-125	0.
125-130	0.
130-135	0.
135-140	0.
140-145	0.
145-150	0.
150-155	0.
155-160	0.
160-165	0.
165-170	0.
170-175	0.
175-180	0.



INDEPENDENT TESTING LABORATORIES, INC.
 3386 LONGHORN ROAD, BOULDER, CO 80302 USA

PHONE: (303)442-1255 • FAX: (303)449-5274 • E-MAIL: itl@itlboulder.com • WEBSITE: www.itlboulder.com

REPORT NUMBER: ITL56710

DATE: 09/23/05

PREPARED FOR: BRUCK LIGHTING SYSTEMS

COEFFICIENTS OF UTILIZATION - ZONAL CAVITY METHOD

EFFECTIVE FLOOR CAVITY REFLECTANCE 0.20

RC	80				70				50			30			10			0
RW	70	50	30	10	70	50	30	10	50	30	10	50	30	10	50	30	10	0
0	116	116	116	116	113	113	113	113	108	108	108	104	104	104	100	100	100	98
1	112	110	108	106	109	107	106	104	104	102	101	100	99	98	97	96	95	93
2	108	104	101	98	106	102	99	97	99	97	95	96	94	93	94	92	91	89
3	104	99	95	92	102	97	94	91	95	92	90	93	90	88	91	89	87	86
4	100	94	90	87	99	93	89	86	91	88	85	90	87	85	88	86	84	82
5	97	91	86	83	95	90	86	83	88	85	82	87	84	81	85	83	81	79
6	94	87	83	80	93	87	82	79	85	82	79	84	81	78	83	80	78	77
7	91	84	80	77	90	84	80	77	83	79	76	82	78	76	81	78	76	74
8	88	82	77	74	88	81	77	74	80	77	74	79	76	74	79	76	73	72
9	86	79	75	72	85	79	75	72	78	74	72	77	74	72	77	74	71	70
10	84	77	73	70	83	77	73	70	76	72	70	75	72	70	75	72	70	69

ALL CANDELA, LUMENS, LUMINANCE, COEFFICIENT OF UTILIZATION AND VCP VALUES IN THIS REPORT ARE BASED ON RELATIVE PHOTOMETRY WHICH ASSUMES A BALLAST FACTOR OF 1.000. ANY CALCULATIONS PREPARED FROM THESE DATA SHOULD INCLUDE AN APPROPRIATE BALLAST FACTOR.