

PHONE: (303)442-1255 • FAX: (303)449-5274 • E-MAIL: itl@itlboulder.com • WEBSITE: www.itlboulder.com

REPORT NUMBER: ITL56709

DATE: 09/26/05

PREPARED FOR: BRUCK LIGHTING SYSTEMS

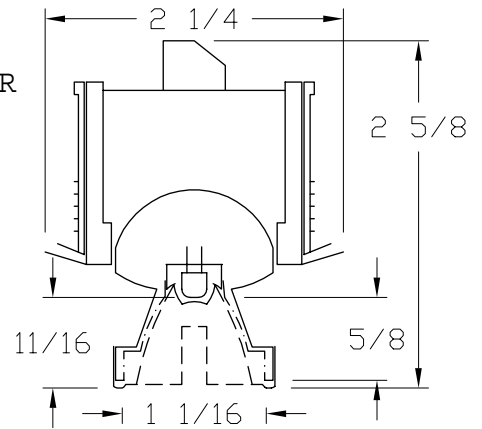
CATALOG NUMBER: LEDRA - 10 DEGREE LENS

LUMINAIRE: FABRICATED METAL HOUSING WITH PIVOTING OPTICAL ASSEMBLY, OPTICAL ASSEMBLY HAS UNFINISHED INTERIOR SURFACE, ONE CIRCUIT BOARD CONTAINING 1 LED, MOLDED WHITE PLASTIC RING ENCOMPASSING LED BASE, CLEAR CONICAL PLASTIC REFRACTOR IN FABRICATED SILVER PAINTED METAL TRIM RING.

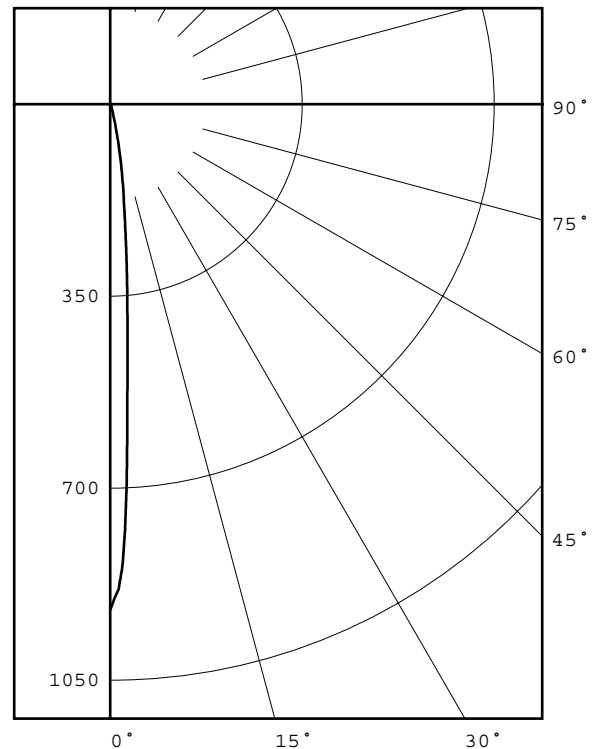
LAMP: ONE WHITE LIGHT EMITTING DIODE (LED), VERTICAL BASE-UP POSITION.

NOTE: DATA SHOWN IS ABSOLUTE FOR THE SAMPLE PROVIDED AT 120 VOLTS AC INPUT TO THE LED ASSEMBLY POWER SUPPLY. A 4 INCH POWER CORD EXTENDS FROM THE POWER SUPPLY TO THE LED ASSEMBLY.

TOTAL INPUT WATTS= 3.5 AT 120.0 VOLTS



DEG	CANDELA	LUMENS
0	922	
5	358	27
15	29	9
25	4	1
35	2	0
45	0	0
55	0	0
65	0	0
75	0	0
85	0	0
90	0	0



ZONAL LUMEN SUMMARY	ZONE	LUMENS	%FIXT
0- 30	39	97.7	
0- 40	40	100.0	
0- 60	40	100.0	
0- 90	40	100.0	
90-180	0	0.0	
0-180	40	100.0	

CIE TYPE - DIRECT  
LUMINAIRE SPACING CRITERION = 0.1  
LUMINOUS DIAMETER: 1.062

LUMINANCE DATA IN CANDELA/SQ M	ANGLE AVERAGE	IN DEG
45	0.	
55	0.	
65	0.	
75	0.	
85	0.	

Checked N.WHITE  
Approved R.BEATTIE



INDEPENDENT TESTING LABORATORIES, INC.  
 3386 LONGHORN ROAD, BOULDER, CO 80302 USA

PHONE: (303)442-1255 • FAX: (303)449-5274 • E-MAIL: [itl@itlboulder.com](mailto:itl@itlboulder.com) • WEBSITE: [www.itlboulder.com](http://www.itlboulder.com)

REPORT NUMBER: ITL56709  
 PREPARED FOR: BRUCK LIGHTING SYSTEMS

DATE: 09/26/05

CANDELA DISTRIBUTION

0.0	922
0.5	901
1.0	884
1.5	844
2.0	777
2.5	690
3.0	596
3.5	514
4.0	451
4.5	401
5.0	358
5.5	320
6.0	285
6.5	253
7.0	225
7.5	200
8.0	179
8.5	163
9.0	148
9.5	133
10.0	118
10.5	103
11.0	89
11.5	77
12.0	67
12.5	58
13.0	50
13.5	44
14.0	38
14.5	33
15.0	29
15.5	24
16.0	22
16.5	19
17.0	16
17.5	13
18.0	12
18.5	10
19.0	9
19.5	8
20.0	8
22.5	6
25.0	4
27.5	3
30.0	2
32.5	2
35.0	2
37.5	1
40.0	0
42.5	0
45.0	0
47.5	0
50.0	0
52.5	0
55.0	0
57.5	0
60.0	0
65.0	0
70.0	0
75.0	0
80.0	0
85.0	0
90.0	0

ZONAL LUMEN SUMMARY

0- 5	13.
5- 10	14.
10- 15	7.
15- 20	2.
20- 25	1.
25- 30	1.
30- 35	1.
35- 40	0.
40- 45	0.
45- 50	0.
50- 55	0.
55- 60	0.
60- 65	0.
65- 70	0.
70- 75	0.
75- 80	0.
80- 85	0.
85- 90	0.
90- 95	0.
95-100	0.
100-105	0.
105-110	0.
110-115	0.
115-120	0.
120-125	0.
125-130	0.
130-135	0.
135-140	0.
140-145	0.
145-150	0.
150-155	0.
155-160	0.
160-165	0.
165-170	0.
170-175	0.
175-180	0.



INDEPENDENT TESTING LABORATORIES, INC.  
 3386 LONGHORN ROAD, BOULDER, CO 80302 USA

PHONE: (303)442-1255 • FAX: (303)449-5274 • E-MAIL: itl@itlboulder.com • WEBSITE: www.itlboulder.com

REPORT NUMBER: ITL56709

DATE: 09/26/05

PREPARED FOR: BRUCK LIGHTING SYSTEMS

COEFFICIENTS OF UTILIZATION - ZONAL CAVITY METHOD

EFFECTIVE FLOOR CAVITY REFLECTANCE 0.20

RC	80				70				50			30			10			0		
	RW	70	50	30	10	70	50	30	10	50	30	10	50	30	10	50	30	10	0	
0	122	122	122	122	122	119	119	119	119	119	114	114	114	114	114	109	109	109	109	103
1	119	117	115	114	114	116	115	113	112	112	111	111	101	109	109	107	106	106	106	101
2	116	113	111	110	108	114	111	110	109	107	108	107	105	105	104	103	104	103	101	99
3	113	110	107	104	104	112	108	106	104	104	106	104	102	104	102	101	102	100	99	98
4	111	107	104	101	101	110	106	103	101	101	104	102	100	102	100	99	101	99	98	97
5	109	104	101	99	99	108	104	101	99	99	102	100	98	101	99	97	99	98	96	95
6	107	102	99	97	97	106	102	99	97	97	101	98	96	99	97	95	98	96	95	94
7	105	101	97	95	95	104	100	97	95	95	99	96	95	98	96	94	97	95	94	93
8	104	99	96	94	94	103	98	96	94	94	98	95	93	97	95	93	96	94	93	92
9	102	97	94	92	92	102	97	94	92	92	96	94	92	96	93	92	95	93	92	91
10	101	96	93	91	91	100	96	93	91	91	95	93	91	95	92	91	94	92	91	90

ALL CANDELA, LUMENS, LUMINANCE, COEFFICIENT OF UTILIZATION AND VCP VALUES IN THIS REPORT ARE BASED ON RELATIVE PHOTOMETRY WHICH ASSUMES A BALLAST FACTOR OF 1.000. ANY CALCULATIONS PREPARED FROM THESE DATA SHOULD INCLUDE AN APPROPRIATE BALLAST FACTOR.